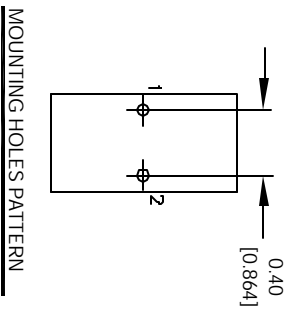
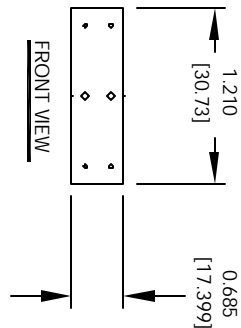
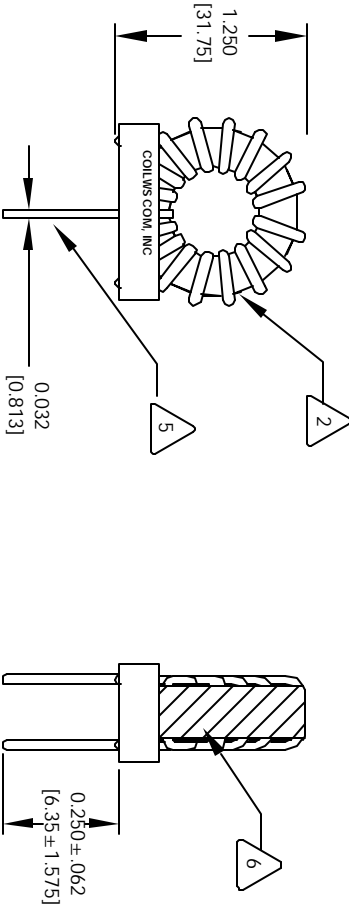
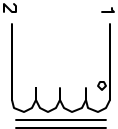


The information contained in this drawing is the sole property of CWS Coil Winding Specialist. Any reproduction in part or whole without written permission of CWS Coil Winding Specialist is prohibited.

REVISION HISTORY

REV	ECN	DESCRIPTION	DATE	BY	CHK	DATE
A		PRE-PRODUCTION RELEASE	7/13/04	JLU		7/14/04



USING A PERMANENT MARKING METHOD  
MARK PART NUMBER AND REVISION, IF APPLICABLE  
IF NEEDED, WRAP INDUCTOR WITH GLASS TAPE



TO THE CORE  
MUST REST FLAT ON PCB. LEADS MUST BE TANGENT  
FLUSH WITH THE COIL EDGE, AS SHOWN (I.E. COIL  
REMOVE INSULATION AND TIN LEADS 0.50 INCH

4 CONSTRUCTION:

WIND COILS EVENLY SPACED AROUND THE CORE

HI-POT TEST FOR WINDING TO CORE ISOLATION = 500VDC MIN  
CURRENT RATING : 3.5 AMPS, 40 °C TEMP. RISE, NO AIR FLOW  
DCR = 88.0 MILLI-OHMS MAX.  
DC BIASED = 3.5 AMPS, INDUCTANCE = 203 UH  
DC BIASED = 5.6 AMPS, INDUCTANCE = 175 UH  
INDUCTANCE = 250 UH +10% @ LOW DC BIAS, 1 KHZ, 250mV



1 SPECIFICATIONS:

WIRE: UL RECOGNIZED 200°C RATED MAGNET WIRE  
CWS BYTEMARK OR OTHER APPROVED PART  
CORE: COATED HIGH FLUX TOROIDAL CORE

RATING CLASS B (130°C MIN.) REQUIRED  
MATERIAL: UL RECOGNIZED 94V-0 FOR FLAMMABILITY

NOTES: TOROIDAL POWER CHOKE. ALL DIMENSIONS IN INCHES

CODE IDENT	MFG. P/N	DESCRIPTION	ITEM NO.
AUTOCAD SOLIDWORKS SIGN	X	PARTS LIST	
DATE	DATE	CWS Coil Winding Specialist. 1510 E. Edinger Ave. Unit B, Santa Ana, CA 92705	
DRAWN	7/13/04	TITLE: Toroidal Power Chokes	
CHKD	7/13/04	Toroid Inductor	
ENGR	7/13/04	SIZE	DRW. NO.
APPR.	7/13/04	B	MHF229-251M-3.5A
JLU		SCALE	REV
		2=1	A
DO NOT SCALE DRAWING			SHEET 1 OF 1